

Evolving backup Technology: Strategies and Connections to D.R. planning

Steve Glowacki

Director of Systems Engineering

Michelle Oda

Windows Systems Engineer II

Where we began

- 36 hour daily backups
- Server to server copies via script
- Just jiggle the cable
- The library is being repaired (again)
- Silos of critical backups

Disaster planning “tests”

- The server room is beneath Biological labs and ‘someone’ left an experiment going.
- “Oops I pulled the wrong card and lost the data!”
- “I know it’s a day later, the data are still restoring.”
- “The Halon system just deployed and we can’t see into the room!”

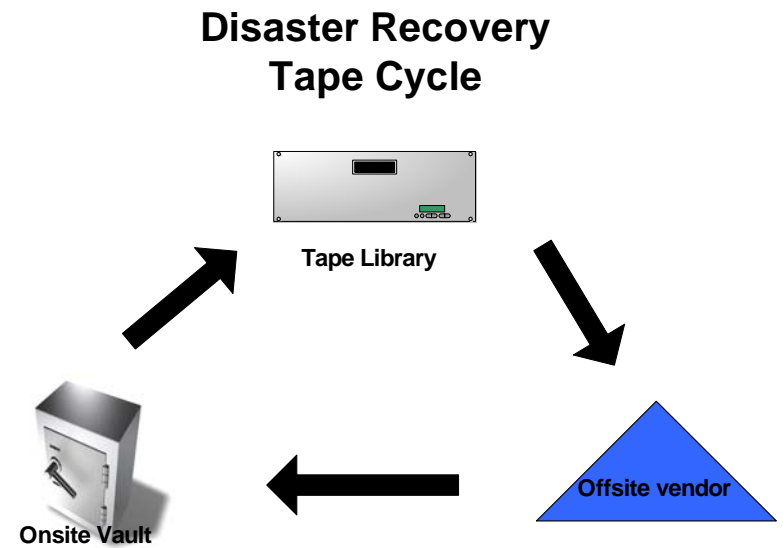
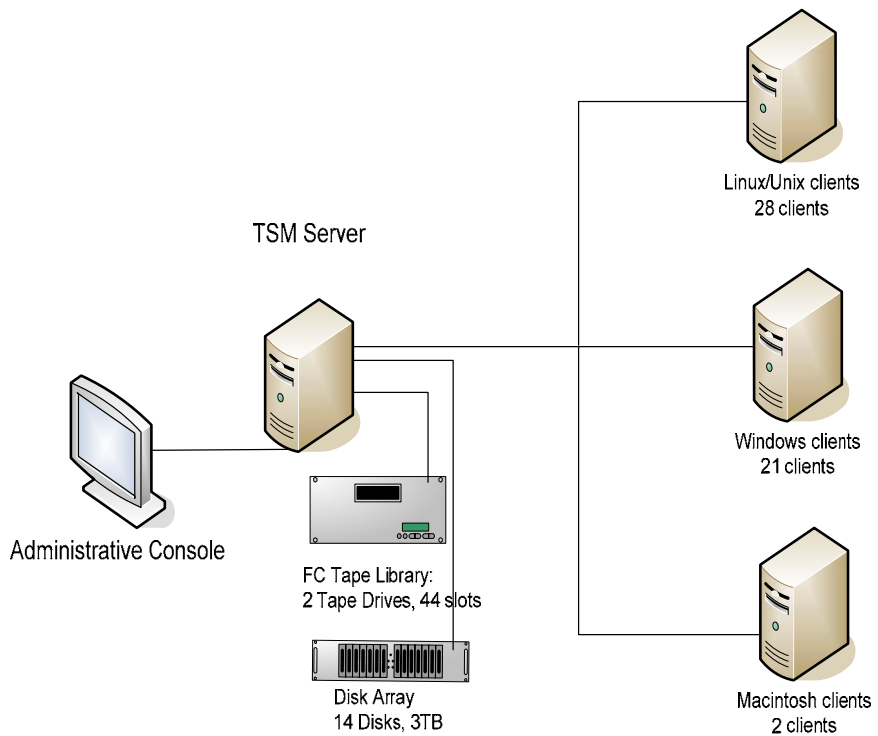
Next steps

- Review needs, hardware and software technologies
- Acquire and setup
- Consolidate?
- Convert

Where are we now?

- FC dual drive tape array with LTO3/LTO2
- SCSI attached storage
- Tivoli backup system
- Offsite tape storage at Iron Mountain
- Offsite electronic recovery plan (daily)
- Disk to disk to tape to offsite

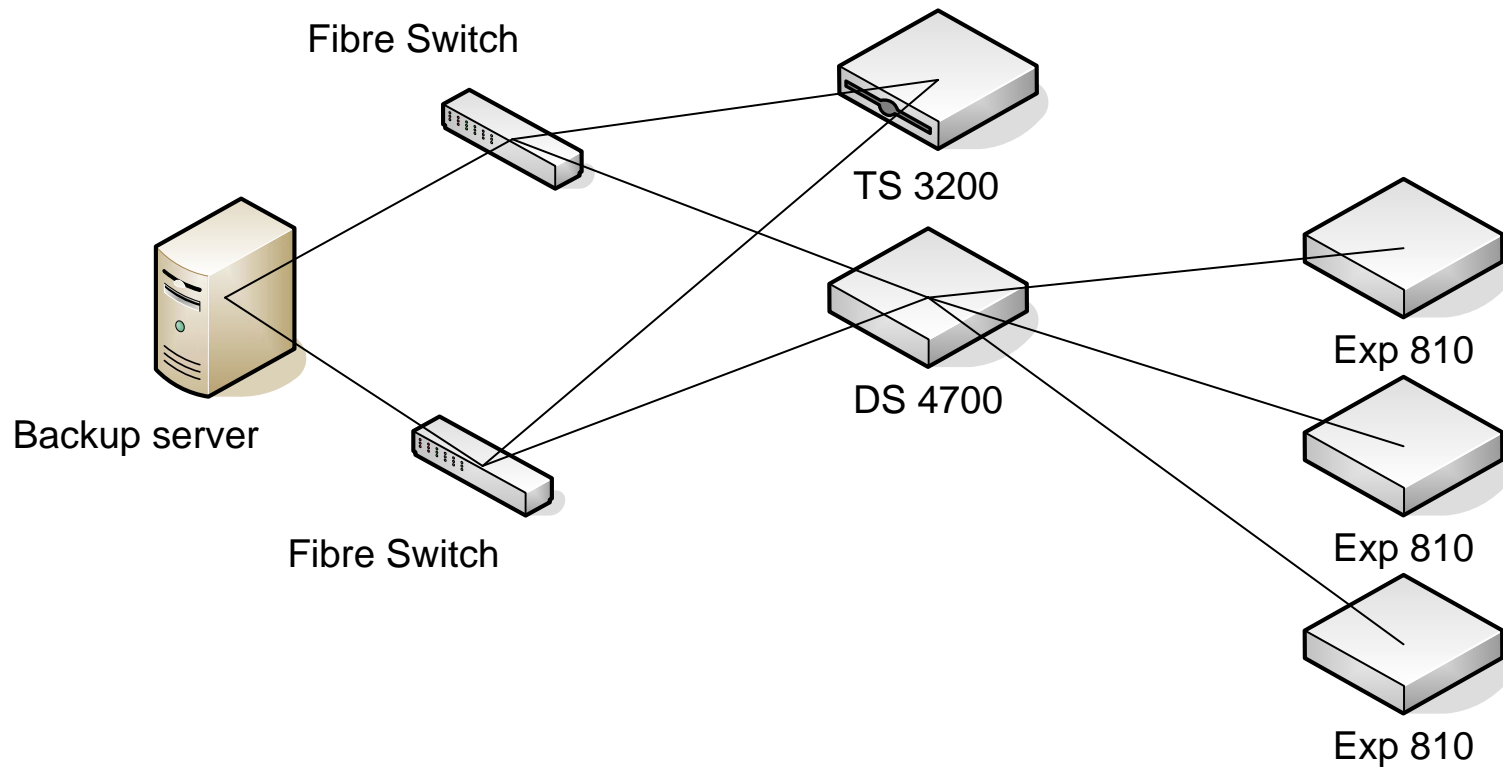
Current backup diagram



The future

- Pure FC environment migration
- DS4700 to Exp810 to TS3200
- Cross campus replication
 - DS 4700 to DS 4700 or 810
- VMWare implementations
- Bare Metal restoration processing

Future backup diagram





Questions?

